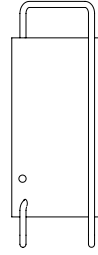


## Asa

Miguel Milá, 1961

Table lamp



In 1961 this lamp was part of the first collection by TRAMO (Trabajos Molestos, or tiresome tasks), the commendable company established by Miguel Milá to self-produce his works at a time when Spain was undergoing deep industrial poverty, when he rudimentarily dabbled in a profession that he would later go on to master, that of a “pre-industrial designer”, as he likes to introduce himself.

Santa & Cole is re-editing both the version with the white shade, the revealing structure and the matte black switch; and the entirely white, very pure and understated version. The inspired lightweight yet robust continuous tube structure also characterises the top handle, ideal for carrying it to any location and for any occasion.

### GENERAL DESCRIPTION

White or black metal structure with matte finish.

White translucent methacrylate lampshade.

Electric cable length: 3.2 m / 125.9”

### LIGHT SOURCE

Recommended light sources:

LED bulb: 6 W

Compact fluorescent: 11 W

Incandescent: Max. 60 W

E27 - E26

(Max. hgt. 105 mm / 4.1”)

Light source not included.

Compatible with bulbs of the

Energy efficiency class (E.E.C):

A++ ... E.

Suitable only for indoor use.

Always use the light source recommended or equivalent.

Input voltaje : 100, 120, 230 Vac.

(50 Hz / 60 Hz). According to destination.

### APPROXIMATE WEIGHT (unpacked)

1,6 Kg / 3.5 lb



## REGULATIONS

CE

IP 20

UNE-EN 60598

UNE-EN 55015

UNE-EN 60529



UL US

Non-class 2

Dry location only

UL-153

E-352592

## MAINTENANCE

Clean with a smooth cloth. Do not use ammonia, solvents or abrasive cleaning products.

## OTROS

The lamp are delivered in one package.

The assembly instructions are delivered with the product.

## MODEL

